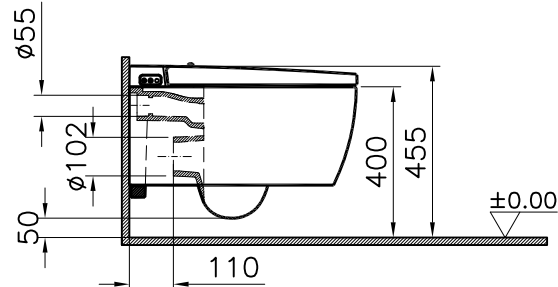
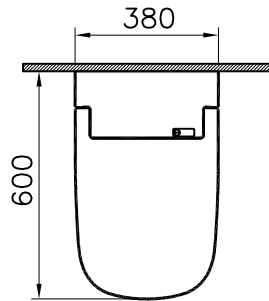
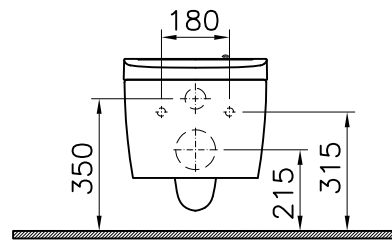


Theoretic Mass(kg)		Revision	
Surface Area(dm ²)		A4	

Thread	Hole	Shaft

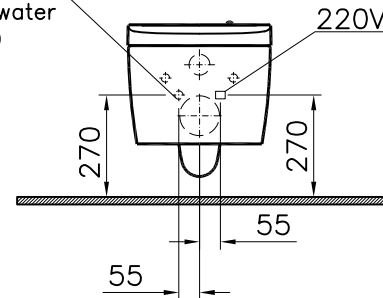


*Duvar kalınlığına göre ilave boru gerekebilir.
 *Additional pipe may be required due to wall thickness
 *Ein zusätzliches Ablaufrohr ist je nach Wandstärke erforderlich



Gizli taharet bağlantısı (3/8")

Concealed water inlet (3/8")



1	1	Wall-hung WC pan	5674-7200	Ceramic	
item	Quantity	Part Name	Drawing No	Material	Material Class
		Series	Ceramic	Material	Material Class
		METROPOLE	Wall-hung WC pan		
		Drawn By	Controlled By	Approved By	Date
		G.GULTER	H.TURKOZ	S.VEDAT SARIGOL	15.09.2014
				Drawing No	Scale
				5674	1/20
				VitrA® ARTEMA®	

R.S	Description	Date	NAME